

UNIVERSITY OF ABERDEEN

NOTICE TO MARINERS

No. UoA/03/2017

MORAY FIRTH & CROMARTY FIRTH, SCOTLAND

Date of notice: 20th March, 2017

Mariners are advised that, in conjunction with Beatrice Offshore Windfarm Limited (BOWL), and further to notice UoA/02/2017, the University of Aberdeen has installed seabed mounted scientific equipment moorings in the Moray Firth at the locations listed below (see also chart extracts at the foot of this notice):

Name	As laid coordinates (WGS84 datum)		Characteristics
162	58° 18.195' N	002° 54.113' W	Subsurface with transponder.
164	58° 12.831' N	002° 51.691' W	Subsurface with transponder.

The moorings support sound recording equipment, and acoustic loggers that record echolocation clicks of dolphins and porpoises (see images of devices at the foot of this notice). Both the above moorings are subsurface, consisting of a 50kg weight and a terminated rope riser. The above moorings do not extend more than three metres vertically from the seabed.

Mariners are further advised that the following existing moorings remain in place in the Moray and Cromarty Firths, as per our Notice to Mariners UoA/02/2017 (see also chart extracts at the foot of this notice):

Name	As laid coordinates		Characteristics
1	57° 41.407' N	003° 58.922' W	Subsurface
2	57° 35.130' N	004° 05.870' W	Surface marked (NB50 buoy, red)
3	57° 44.083' N	003° 19.783' W	Surface marked (dhan, 12' aluminium & RADAR reflector)
4	57° 41.379' N	003° 05.623' W	Surface marked (NB50 buoy, red)
17	57° 57.759' N	3° 31.258' W	Subsurface with acoustic release.
40	57° 48.984' N	3° 36.382' W	Subsurface with acoustic release.
41	57° 51.154' N	3° 33.048' W	Subsurface with acoustic release.
42	57° 52.338' N	3° 29.066' W	Subsurface with acoustic release.
44	57° 56.416' N	3° 21.417' W	Subsurface with acoustic release.
45	57° 57.261' N	3° 16.063' W	Subsurface with acoustic release.
46	58° 00.858' N	3° 15.396' W	Subsurface with acoustic release.
47	58° 00.816' N	3° 08.539' W	Subsurface.
48	58° 04.006' N	3° 06.914' W	Subsurface.
49	58° 04.449' N	3° 00.998' W	Subsurface.
53	58° 11.741' N	2° 45.762' W	Subsurface.
54	58° 13.517' N	2° 41.969' W	Subsurface.
55	58° 16.158' N	2° 39.644' W	Subsurface.
56	58° 18.725' N	2° 37.063' W	Subsurface.
76	58° 17.337' N	2° 50.312' W	Subsurface with transponder.
78	58° 13.565' N	2° 56.750' W	Subsurface.

82	58° 00.621' N	3° 25.692' W	Subsurface with acoustic release.
89	57° 56.051' N	3° 38.250' W	Subsurface with acoustic release.
90	58° 01.061' N	3° 36.584' W	Subsurface with acoustic release.
98	57° 54.165' N	3° 17.854' W	Subsurface with acoustic release.
99	57° 50.856' N	3° 24.445' W	Subsurface with acoustic release.
108	58° 18.998' N	2° 59.211' W	Subsurface.
110	58° 07.667' N	2° 45.368' W	Subsurface.
143	58° 14.730' N	2° 53.056' W	Subsurface with transponder.
144	58° 14.818' N	2° 52.414' W	Subsurface with transponder.
145	58° 15.174' N	2° 52.555' W	Subsurface with transponder.
146	58° 15.231' N	2° 53.321' W	Subsurface with transponder.
147	58° 15.523' N	2° 54.256' W	Subsurface with transponder.
148	58° 15.689' N	2° 53.414' W	Subsurface with transponder.
149	58° 16.002' N	2° 52.037' W	Subsurface with transponder.
150	58° 16.660' N	2° 51.076' W	Subsurface with transponder.
151	58° 14.933' N	2° 54.903' W	Subsurface with transponder.
152	58° 14.808' N	2° 56.411' W	Subsurface with transponder.
153	58° 14.746' N	2° 57.912' W	Subsurface with transponder.
154	58° 10.770' N	2° 55.745' W	Subsurface with transponder.
155	58° 10.678' N	2° 56.563' W	Subsurface with transponder.
156	58° 10.993' N	2° 56.624' W	Subsurface with transponder.
157	58° 10.241' N	2° 54.663' W	Subsurface with transponder.
158	58° 09.747' N	2° 53.444' W	Subsurface with transponder.
159	58° 09.262' N	2° 52.228' W	Subsurface with transponder.
160	58° 17.636' N	2° 49.911' W	Subsurface.
161	58° 12.998' N	2° 55.942' W	Subsurface.
163	58° 17.960' N	2° 44.988' W	Subsurface.
165	58° 12.471' N	3° 01.260' W	Subsurface.
166	58° 07.799' N	2° 55.205' W	Subsurface.

A further Notice to Mariners will be issued when the removed moorings are permanently discontinued.

For information and enquiries please contact:

Tim Candido Barton,

Lighthouse Field Station, University of Aberdeen, George St., Cromarty, Ross-shire, IV11 8YL.

+44 (0)1381 600548.

t.r.barton@abdn.ac.uk



Acoustic logger
(600 x 95mm)

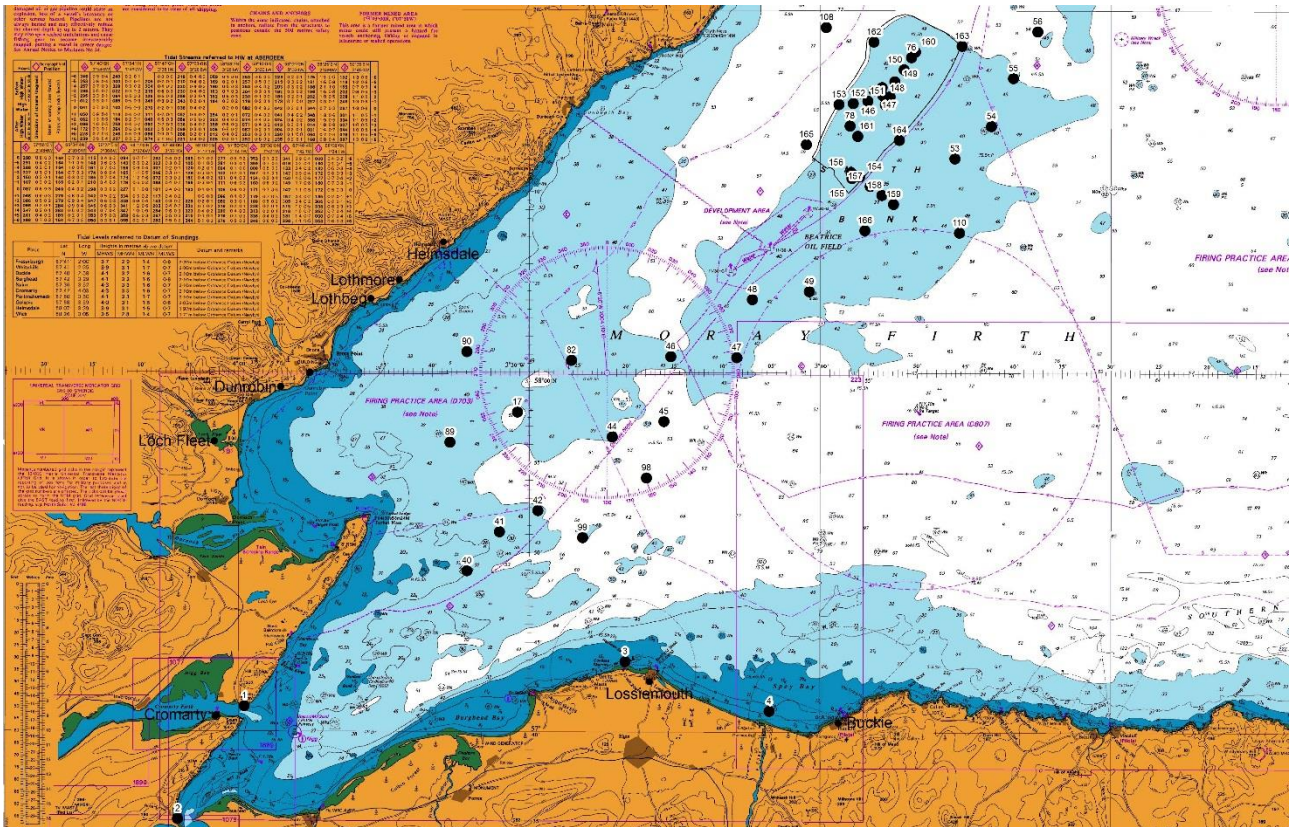


Sound recorder
(900 x 170mm)

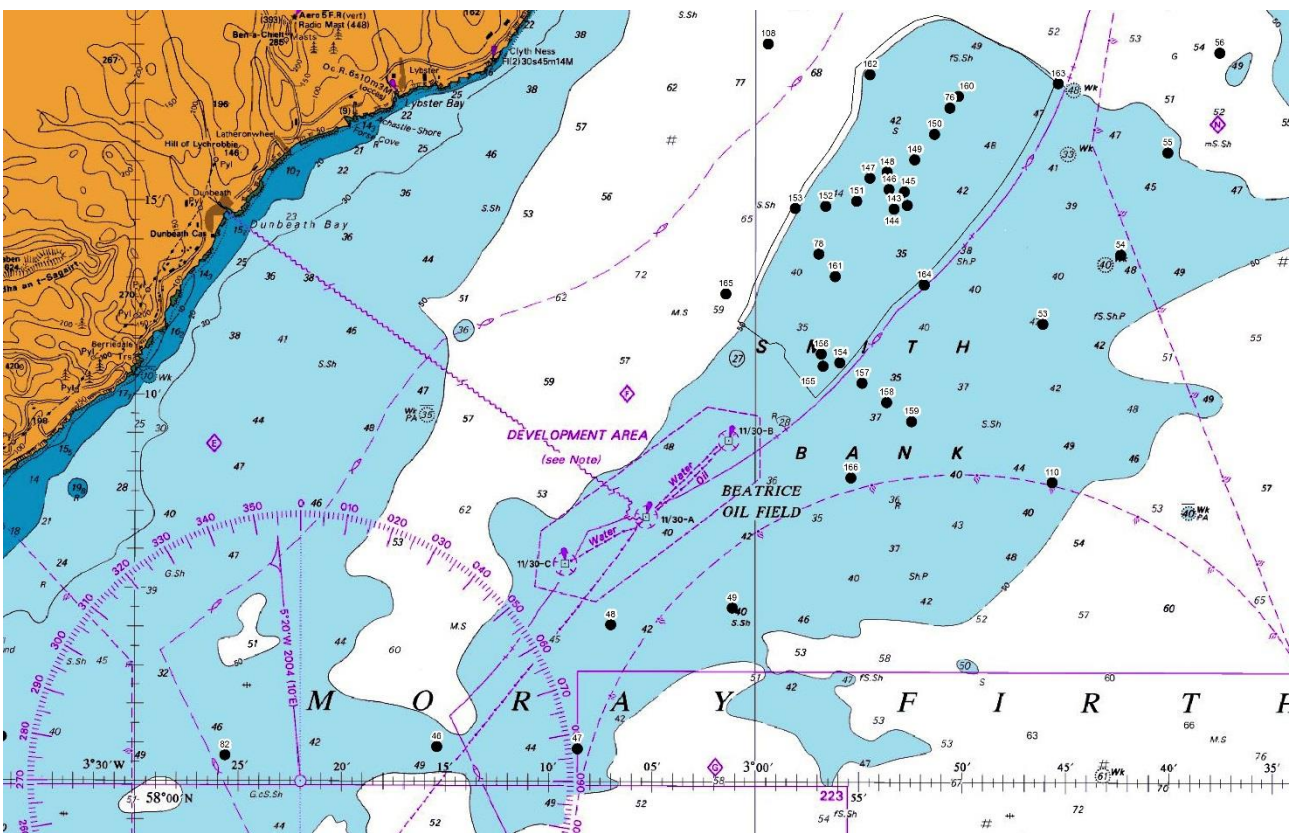


Sound recorder
(200 x 60mm)

Examples of equipment which the above moorings support.



Mooring locations – Moray Firth, all sites.



Mooring locations – detail of Smith Bank sites, Moray Firth.