

UNIVERSITY OF ABERDEEN

NOTICE TO MARINERS

No. UoA/01/2017

MORAY FIRTH & CROMARTY FIRTH, SCOTLAND

Date of notice: 2nd February, 2017


Mariners are advised that, in conjunction with Beatrice Offshore Windfarm Limited (BOWL), the University of Aberdeen intends to install seabed mounted scientific equipment moorings in the Moray Firth at the locations listed below (see also chart extracts at the foot of this notice):

| Name | Provisional coordinates | | Characteristics |
|------|-------------------------|----------------|-----------------------------------|
| 17 | 57° 57.754' N | 003° 31.262' W | Subsurface with acoustic release. |
| 40 | 57° 48.985' N | 003° 36.379' W | Subsurface with acoustic release. |
| 41 | 57° 51.153' N | 003° 33.032' W | Subsurface with acoustic release. |
| 42 | 57° 52.326' N | 003° 29.071' W | Subsurface with acoustic release. |
| 44 | 57° 56.418' N | 003° 21.416' W | Subsurface with acoustic release. |
| 45 | 57° 57.267' N | 003° 16.087' W | Subsurface with acoustic release. |
| 46 | 58° 00.856' N | 003° 15.377' W | Subsurface with acoustic release. |
| 47 | 58° 00.808' N | 003° 08.539' W | Subsurface. |
| 48 | 58° 04.010' N | 003° 06.924' W | Subsurface. |
| 49 | 58° 04.444' N | 003° 00.989' W | Subsurface. |
| 53 | 58° 11.749' N | 002° 45.793' W | Subsurface. |
| 54 | 58° 13.523' N | 002° 41.973' W | Subsurface. |
| 55 | 58° 16.157' N | 002° 39.638' W | Subsurface. |
| 56 | 58° 18.722' N | 002° 37.062' W | Subsurface. |
| 76 | 58° 17.335' N | 002° 50.317' W | Subsurface with transponder. |
| 78 | 58° 13.572' N | 002° 56.755' W | Subsurface. |
| 82 | 58° 00.617' N | 003° 25.689' W | Subsurface with acoustic release. |
| 89 | 57° 56.050' N | 003° 38.244' W | Subsurface with acoustic release. |
| 90 | 58° 01.057' N | 003° 36.577' W | Subsurface with acoustic release. |
| 98 | 57° 54.166' N | 003° 17.853' W | Subsurface with acoustic release. |
| 99 | 57° 50.853' N | 003° 24.442' W | Subsurface with acoustic release. |
| 108 | 58° 18.995' N | 002° 59.233' W | Subsurface. |
| 110 | 58° 07.659' N | 002° 45.361' W | Subsurface. |
| 143 | 58° 14.730' N | 002° 53.069' W | Subsurface with transponder. |
| 144 | 58° 14.820' N | 002° 52.422' W | Subsurface with transponder. |
| 145 | 58° 15.174' N | 002° 52.554' W | Subsurface with transponder. |
| 146 | 58° 15.234' N | 002° 53.316' W | Subsurface with transponder. |
| 147 | 58° 15.528' N | 002° 54.240' W | Subsurface with transponder. |
| 148 | 58° 15.684' N | 002° 53.400' W | Subsurface with transponder. |
| 149 | 58° 16.002' N | 002° 52.047' W | Subsurface with transponder. |
| 150 | 58° 16.656' N | 002° 51.078' W | Subsurface with transponder. |
| 151 | 58° 14.934' N | 002° 54.900' W | Subsurface with transponder. |
| 152 | 58° 14.805' N | 002° 56.415' W | Subsurface with transponder. |
| 153 | 58° 14.748' N | 002° 57.912' W | Subsurface with transponder. |

| | | | |
|-----|---------------|----------------|------------------------------|
| 154 | 58° 10.770' N | 002° 55.740' W | Subsurface with transponder. |
| 155 | 58° 10.680' N | 002° 56.550' W | Subsurface with transponder. |
| 156 | 58° 10.992' N | 002° 56.640' W | Subsurface with transponder. |
| 157 | 58° 10.236' N | 002° 54.642' W | Subsurface with transponder. |
| 158 | 58° 09.739' N | 002° 53.442' W | Subsurface with transponder. |
| 159 | 58° 09.246' N | 002° 52.224' W | Subsurface with transponder. |
| 160 | 58° 17.631' N | 002° 49.903' W | Subsurface. |
| 161 | 58° 12.993' N | 002° 55.953' W | Subsurface. |
| 162 | 58° 18.200' N | 002° 54.240' W | Subsurface with transponder. |
| 163 | 58° 17.950' N | 002° 45.000' W | Subsurface. |
| 164 | 58° 12.770' N | 002° 51.590' W | Subsurface with transponder. |
| 165 | 58° 12.550' N | 003° 01.300' W | Subsurface. |
| 166 | 58° 07.800' N | 002° 55.200' W | Subsurface. |

The moorings support sound recording equipment, and acoustic loggers that record echolocation clicks of dolphins and porpoises (see images of devices at the foot of this notice). All the above moorings will be subsurface, consisting of a 50kg weight and a terminated rope riser. The above moorings will not extend more than three metres vertically from the seabed. Thirty two of the above moorings will also be equipped with an acoustic release or transponder.

Installation will cover the period 15th February to 15th March, and will be conducted by Moray First Marine Ltd., using the vessel “Coral Wind”.

| Coral Wind | |
|--|--|
| General Description and Dimensions: | Workboat, UK MCA Cat.2, 60nm from safe haven LOA 14m, Beam 5.1m, Draft 1.2m |
| Call sign: | 2EMX8 |
| MMSI: | 235086491 |
| On Board Contact: | Bill Ruck, 07775 802963 |
| E-mail: | bill@moraymarine.com |
|  | |

Mariners are further advised that, the following existing moorings remain in place in the Moray and Cromarty Firths, as per our Notice to Mariners UoA/04/2016 (see also chart extracts at the foot of this notice):

| Name | As laid coordinates | | Characteristics |
|------|---------------------|----------------|--|
| 1 | 57° 41.407' N | 003° 58.922' W | Subsurface |
| 2 | 57° 35.130' N | 004° 05.870' W | Surface marked (NB50 buoy, red) |
| 3 | 57° 44.083' N | 003° 19.783' W | Surface marked (dhan, 12' aluminium & RADAR reflector) |
| 4 | 57° 41.379' N | 003° 05.623' W | Surface marked (dhan, 12' aluminium & RADAR reflector) |

A further Notice to Mariners will be issued when the removed moorings are permanently discontinued.

For information and enquiries please contact:

Tim Candido Barton,

Lighthouse Field Station, University of Aberdeen, George St., Cromarty, Ross-shire, IV11 8YL.

+44 (0)1381 600548.

t.r.barton@abdn.ac.uk



Acoustic logger
(600 x 95mm)

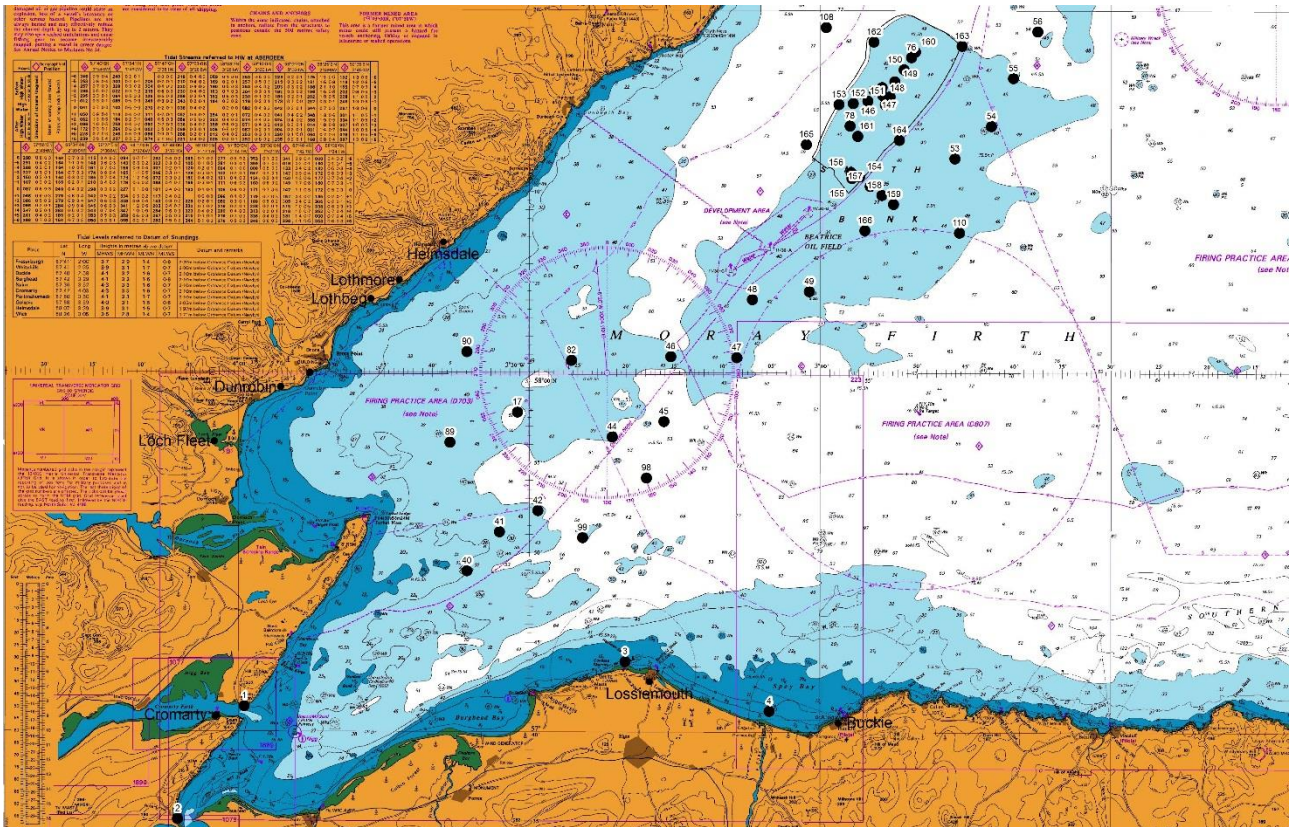


Sound recorder
(900 x 170mm)

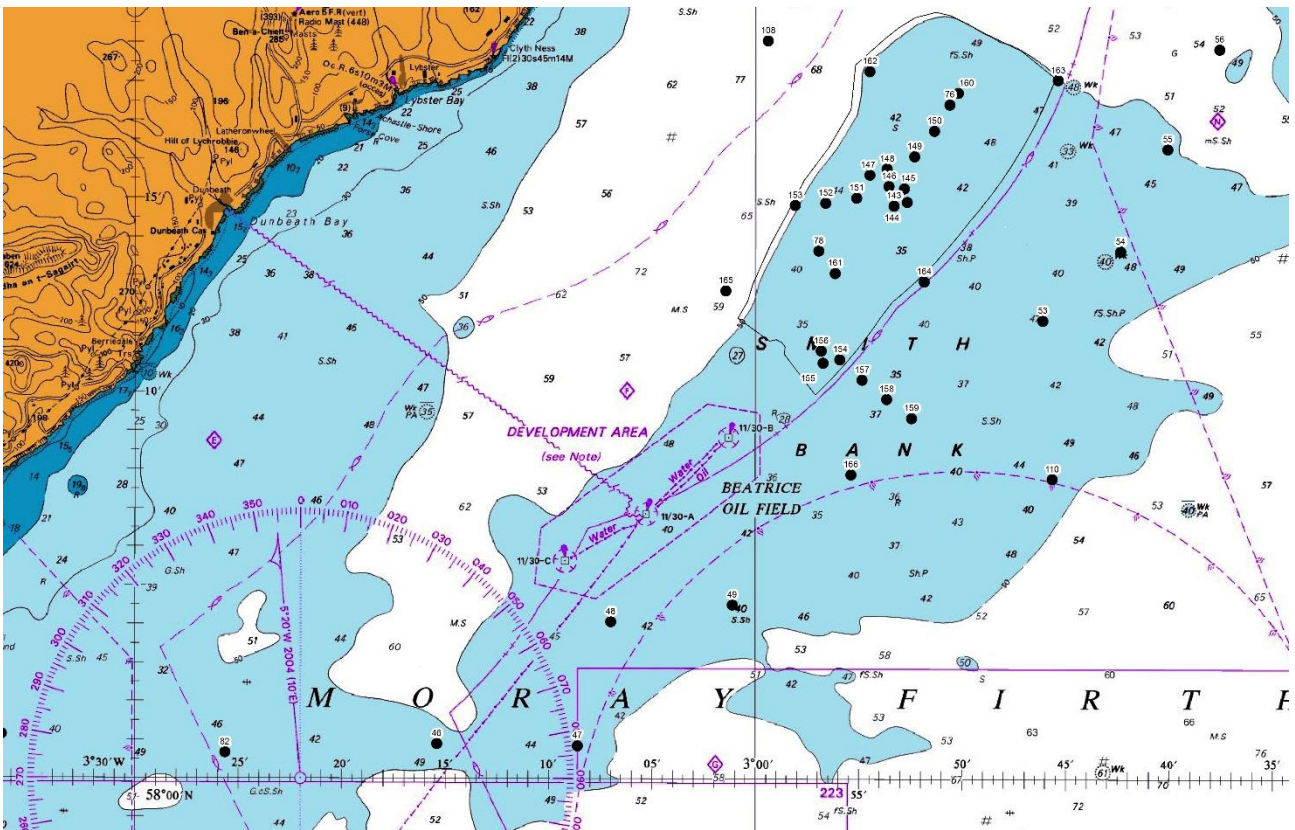


Sound recorder
(200 x 60mm)

Examples of equipment which the above moorings will support.



Mooring locations – Moray Firth, all sites.



Mooring locations – detail of Smith Bank sites, Moray Firth.